



ID Number: 20031377

Sunnica Energy Farm EN010106

Suffolk County Council ISH1 Further Information Requested by the ExA Deadline 2

11 November 2022

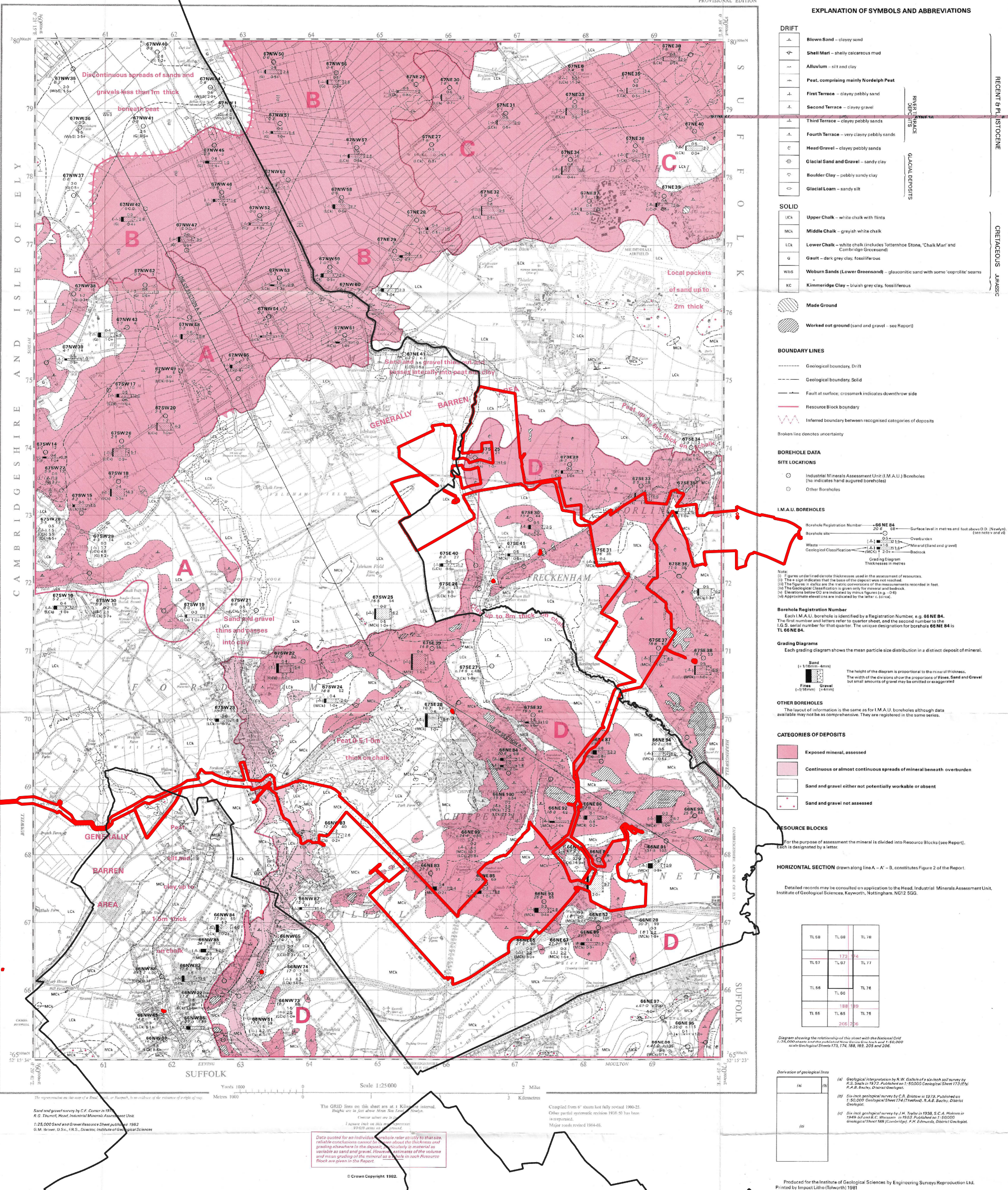
This submission of further information responds to Action Point 2 of ISH1, which is a request for higher resolution versions of maps included in the joint LIR to be made available.



It should be noted that these are based on scans of physical documents which were published in a non-standard paper format published some time ago, and there are therefore limits to how clearly they can be presented (for example, it is not possible to ensure that the scale displays accurately on a digital monitor or when printed). It may be possible to provide physical access to the original documents at our Ipswich office if the ExA considers it necessary.

ORDNANCE SURVEY
SHEET TL67 & PART OF TL66
PROVISIONAL EDITION

ORDNANCE SURVEY
OF TL66
PROVISIONAL EDITION

This map should be read in conjunction with the accompanying Report which contains details of the assessment of resources.



 County Boundary
 Sunnica Order Limits

THE SAND & GRAVEL RESOURCES OF THE COUNTRY BETWEEN
MILDENHALL AND BARROW, SUFFOLK (TL 76 & 77 AND PART OF TL 87)

Scale 1:25 000 or about 2½ Inches to 1 Mile

ORIGINATOR SURVEY
SHEETS TL 76 & 77
PROVISIONAL EDITION

THE SAND & GRAVEL RESOURCES OF THE COUNTRY BETWEEN
MILDENHALL AND BARROW, SUFFOLK (TL 76 & 77 AND PART OF TL 87)

This map should be read in conjunction with the accompanying Report
which contains details of the assessment of resources.

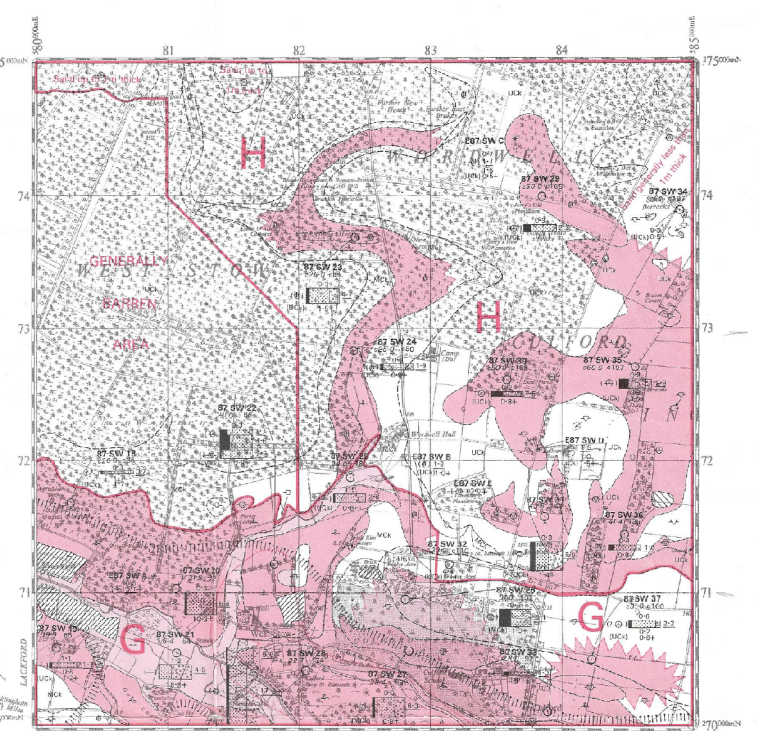
EXPLANATION OF SYMBOLS AND ABBREVIATIONS

- DRAFT**
- Blown Sand - fine-grained quartz sand.
 - Peat - soft dark brown organic matter.
 - Alluvium - clay and silt.
 - Cover Sand - fine-grained sand, some pebbles.
 - River Terrace Deposits - sand and gravel, locally clayey.
 - Head - clays, sands and gravels in varying proportions, locally chalky.
 - Glacial Silt - soft grey silts and clays.
 - Boulder Clay - grey chalky pebbly clay.
 - Glacial Sand and Gravel - sand and gravel, locally clayey.
- SOLID**
- Upper Chalk - massively bedded white chalk, with flint seams.
 - Lower Chalk - white chalk with low flints, locally cherty, Melbourn Rock.
 - Lower Chalk - grey chalk, with many seams.
- MADE GROUND**
- Made ground
 - Area worked for sand and gravel

- BOUNDARY LINES**
- Geological boundary, Drift
 - Geological boundary, Solid (broken line denotes uncertainty)
 - Limit of Drift (solid or dashed)
 - Resource Block boundary
 - Internal boundary between mapped categories of deposits (see below)
 - Internal sub-surface limits of Glacial Sand and Gravel associated with buried channels

CONTINUATION OF RESOURCE SHEET

SHEET TL87(SW)

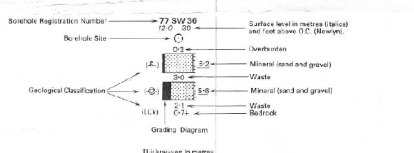


BOREHOLE DATA

SITE LOCATIONS

- Industrial Minerals Assessment Unit (I.M.A.U.) boreholes
- Other boreholes

I.M.A.U. BOREHOLES



Note: (a) Figures indicated denote thicknesses used in the assessment of resources.

(b) The 'a' sign indicates that the base of the deposit was not reached.

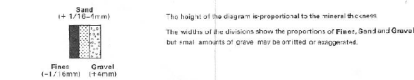
(c) The Geological Classification is given only for mineral and sand.

Borehole Registration Number

Each I.M.A.U. borehole is identified by a Registration Number, eg. 77 SW 36. The first number and letters refer to the quarter sheet, and the second to the I.M.A.U. serial number for that quarter. The unique designation for borehole 77 SW 36 is TL 76 SW 36.

Grading Diagrams

Each grading diagram shows the mean particle size distribution of a distinct deposit of mineral.



OTHER BOREHOLES

The legend of information is the same as for I.M.A.U. boreholes, although data available may not be as comprehensive.

EXPOSURE RECORDS

Information from the inspection of exposures is shown in the same way as for boreholes, but they are located by an external, thus: * The reference number and details of exposures are shown.

CATEGORIES OF DEPOSITS

- Exposed mineral.
- Continuous or almost continuous spreads of mineral beneath overburden.
- Sand and gravel either absent or not potentially workable.
- Sand and gravel not assessed.

RESOURCE BLOCKS

For the purposes of the assessment, the map is divided into Resource Blocks (see Report). Each Block is designated by a letter.

A horizontal section (1 to A-A') constitutes Figure 3 of the Report.

Detail records may be consulted on application to the Head, Industrial Minerals Assessment Unit, Institute of Geological Sciences, Keyworth, Nottingham NG12 5GG.

TL 76 172	TL 76 174	TL 76 176
TL 76 178	TL 76 180	TL 76 182
TL 76 184	TL 76 186	TL 76 188
TL 76 190	TL 76 192	TL 76 194
TL 76 196	TL 76 198	TL 76 200

TL 76 172	TL 76 174	TL 76 176
TL 76 178	TL 76 180	TL 76 182
TL 76 184	TL 76 186	TL 76 188
TL 76 190	TL 76 192	TL 76 194
TL 76 196	TL 76 198	TL 76 200

TL 76 172	TL 76 174	TL 76 176
TL 76 178	TL 76 180	TL 76 182
TL 76 184	TL 76 186	TL 76 188
TL 76 190	TL 76 192	TL 76 194
TL 76 196	TL 76 198	TL 76 200

Diagram showing the location of the assessed area with the National Grid (1:25 000) and published 1:25 000 Geological sheets TL 76 and 77.

Diagram showing the location of the assessed area with the National Grid (1:25 000) and published 1:25 000 Geological sheets TL 76 and 77.

Diagram showing the location of the assessed area with the National Grid (1:25 000) and published 1:25 000 Geological sheets TL 76 and 77.

- County Boundary
- Sunnica Order Limits

The GRID lines on this sheet are at 1 kilometre intervals.

Grid lines are at 1 kilometre intervals.

Grid lines are at 1 kilometre intervals.

Grid lines are at 1 kilometre intervals.

Grid lines are at 1 kilometre intervals.

Grid lines are at 1 kilometre intervals.

Grid lines are at 1 kilometre intervals.

Grid lines are at 1 kilometre intervals.

Grid lines are at 1 kilometre intervals.

© Crown copyright 1981, 1983

Map published by the Ordnance Survey, Southampton

Map published by the Ordnance Survey, Southampton

Map published by the Ordnance Survey, Southampton

Map published by the Ordnance Survey, Southampton

Map published by the Ordnance Survey, Southampton

Map published by the Ordnance Survey, Southampton

Map published by the Ordnance Survey, Southampton

Map published by the Ordnance Survey, Southampton

Map published by the Ordnance Survey, Southampton